

## **Pacific Sierra Corporation**

**Designers Suppliers Packaging and Consultants**

**Pacific Custom Home Packages, Inc.**

**We Design & Build Luxury or Low Cost Primary and Vacation Homes**

**Worldwide Shipments 24Hour Service**



Whether in Hawaii, Europe or Asia, Pacific Sierra Corporation buildings reflect the landscape, natural cooling and heating characteristics, and view channels to complement the building site and suit the needs of its occupants. Our planners and designers combine these elements to create custom buildings of beauty and practicality. Standard plans and panelized buildings are also available.

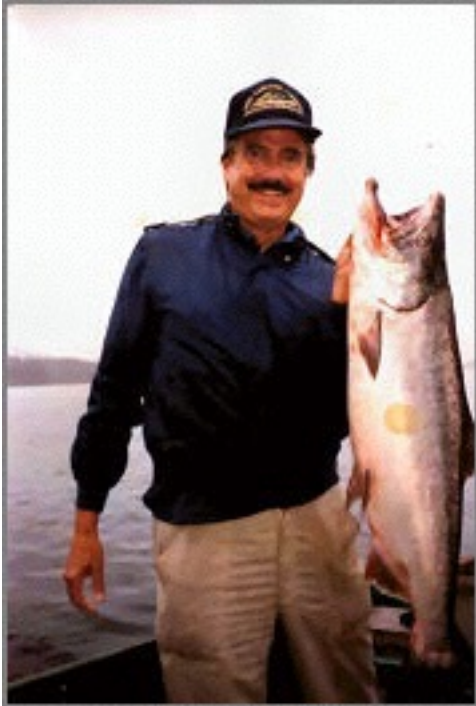
Pacific Sierra Corporation

[homepackages.com](http://homepackages.com)

Phone: (503) 2978242

[pacific@homepackages.com](mailto:pacific@homepackages.com)

## About Pacific Sierra Corporation



**C.E.O & President  
John Ferguson**

Pacific Sierra Corporation was founded and incorporated in the State of Oregon, U.S.A. in 1971.

We Consult, Design, Supply, Build and Ship Complete Home Packages anywhere in the world.

We employ the advantages of Portland, Oregon's unlimited port facilities and local availability of all lumber and unlimited selections of all other building materials.

From vision to completion Pacific Sierra Corporation is in a position to provide every facet of a project from construction plans locally to a complete buildable package containerized and delivered anywhere in the world.

Pacific takes pride in prompt customer service.

## Panelized Homes ( A Pacific Alternative )

### CRAFTSMANSHIP THROUGH ENGINEERING



- Every building is an engineered structure. The moment a nail is driven into two boards, load transfers from one board to the other, so designing and engineering all structures is important. A house using components is fully engineered.
- Each component is designed specifically for your building.
- Each component locations is defined, making components easy to use in the field.
- All the loads go where they belong. You won't have uneven floors, or windows and doors that don't close properly - no surprises!
- Engineering with computer software makes craftsmanship easy with components, and gives you design flexibility.

### CRAFTSMANSHIP THROUGH ENGINEERING

- A manufacturing facility creates quality components, often starting with computer-controlled saws, which make accurate compound cuts simple. All component joints fit together tightly in precision jigs. Manufacturing can also be computer-controlled, for faster setup times and efficient production.
- Weather is not a factor. Production can continue day and night, providing consistent quality.
- Material shortage delays are less likely, since the entire system is supplied in one package.
- Callbacks are reduced. Components made with dry lumber are less likely to shrink, warp and twist.
- Components are rarely stolen from the job site.

Click to view the Panelized Home Construction Process here:

[http://homepackages.com/panelized\\_construction.html](http://homepackages.com/panelized_construction.html)

Pacific Sierra Corporation

[homepackages.com](http://homepackages.com)

Phone: (503) 2978242

[pacific@homepackages.com](mailto:pacific@homepackages.com)

# Pacific Sierra Corporation

## Designers - Suppliers - Packaging and Shipping

### Designers

Whether in Hawaii, Europe or Asia, Pacific Sierra Corporation buildings reflect the landscape, natural cooling and heating characteristics, and view channels to complement the building site and to suit the needs of its occupants. Our planners and designers combine these elements to create custom buildings of beauty and practicality. Standard plans and panelized buildings are also available.

### Suppliers

Pacific Sierra offers unlimited selections of quality materials including, but not limited to, basic weather-tight structures, fine cabinetry and millwork, appliances, spas and plumbing, wall coverings, etc. Virtually any product on the market is available to our clients.

### Packaging and Shipping

Material packages are checked and re-checked for quality and quantity prior to containerization at the firm's loading facility. Unloading is considered along with careful packing to allow for ease of material handling at the final destination. All shipping dates are coordinated with the building schedule to expedite on-site construction. Shipment is by the world's leading shipping companies.

### Residential • Recreational • Retirement

#### Custom Design from Your Ideas or Stock Plans Customized

- Packages to Any Stage
- Unlimited Material Selections
- Free Site Analysis

#### How Pacific Makes Home Building Fun and Easy:

- Your Custom Plans are Prepared
- Permits Are Processed
- Material Packages Shipped
- Enjoy the Home of Your Dreams
- Pricing to Fit Your Budget

## Hawaii Stock Plan Collection

(All Plans May Be Tailored to Fit)

Pacific Sierra Corp. has several Hawaiian Custom Home Packages available for you to choose from.

### Hawaii Custom Home Package

House Packages From \$19,995



2 Story - 5 Bedrooms



2240 Sq Ft.



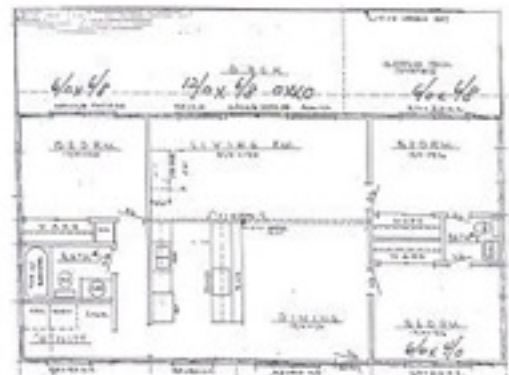
1st Floor



2nd Floor



1104 Sq. Ft.



Floor Plan

Click to view larger images on the website: <http://homepackages.com/hawaii.html>

Pacific Sierra Corporation

Phone: (503) 2978242

[homepackages.com](http://homepackages.com)

[pacific@homepackages.com](mailto:pacific@homepackages.com)

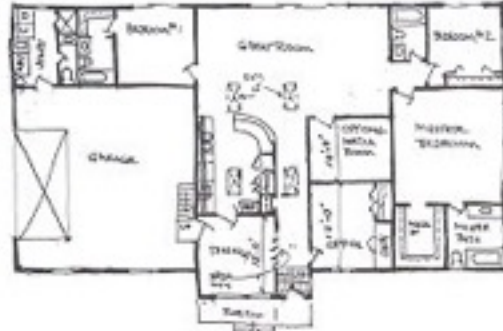
# Hawaii Stock Plan Collection

(All Plans May Be Tailored to Fit) Hawaii Custom Home Packages

House Packages From \$19,995



2660 Sq. Ft.



Floor Plan



Plan No. 1215

Pacific Sierra Corporation



Plan No. 2100-B

Plan No. 2100-A

Pacific Sierra Corporation

Click to view larger images on the website: <http://homepackages.com/hawaii.html>

Pacific Sierra Corporation

Phone: (503) 2978242

[homepackages.com](http://homepackages.com)

[pacific@homepackages.com](mailto:pacific@homepackages.com)

## Hawaii Stock Plan Collection

(All Plans May Be Tailored to Fit) Hawaii Custom Home Packages

House Packages From \$19,995



Click to view larger images on the website: <http://homepackages.com/hawaii.html>

You determine pricing. Please tell us what you need from the following packages.

1. Weather tight - lock tight package.
2. Complete material package.
3. Wall panel package.
4. Stock plan.
5. Custom plan.
6. Interior package.
7. House in a box - 600 sq. ft.

Pacific Sierra Corporation

[homepackages.com](http://homepackages.com)

Phone: (503) 2978242

[pacific@homepackages.com](mailto:pacific@homepackages.com)

## Photo Gallery of Hawaiian Home Packages



1. Custom Mediterranean



2. Hawaii Custom Package



3. Hawaii Material Package

Pacific Sierra Corporation

[homepackages.com](http://homepackages.com)

Phone: (503) 2978242

[pacific@homepackages.com](mailto:pacific@homepackages.com)



## Photo Gallery of Hawaiian Home Packages



Pacific Sierra Corporation

[homepackages.com](http://homepackages.com)

Phone: (503) 2978242

[pacific@homepackages.com](mailto:pacific@homepackages.com)

## Contact Pacific Sierra Corporation



**HomePackages.com**

Designers / Suppliers / Consultants

Founded 1971  (503) 297 - 8242

### Mailing Address:

**Pacific Sierra Corporation**

**PO Box 25752,**

**Portland, OR. 97298**

**Phone: (503) 297-8242**



**[pacific@homepackages.com](mailto:pacific@homepackages.com)**



**Pacific Sierra Corporation**

[homepackages.com](http://homepackages.com)

Phone: (503) 2978242

[pacific@homepackages.com](mailto:pacific@homepackages.com)